

# Getinge K-series

## Benefits

**GETINGE**  
GETINGE GROUP



### Superior Capacity and Efficiency

#### Getinge K3+

for the normal practice with medium turnover of sterile goods  
- 6 trays per process or 12 trays in just one hour

#### Getinge K5+

for the larger practice with higher turnover of sterile goods  
- 10 trays per process or 20 trays in just one hour

#### Getinge K7+

for the larger practice with higher turnover of sterile goods  
- 100 mm deeper chamber for longer instruments  
- 10 trays + 10 minitrays per cycle or  
20 trays + 20 minitrays in just one hour

In the rectangular chamber, almost 100% of the volume is used.



### “High-speed Sterilization™”

- B-process in only 25 minutes, including drying
- 10 wrapped handpieces in just 15 minutes
- Flash program for unwrapped solid instruments in a mere 9 minutes

### More Benefits

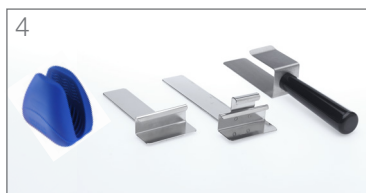
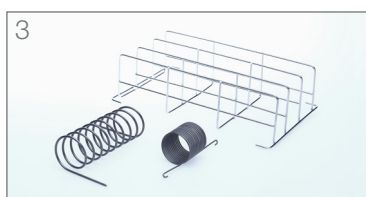
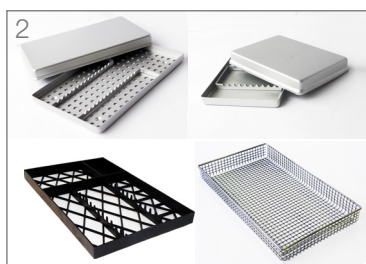
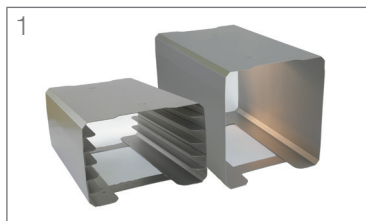
- Safety door - no burn injuries on the hot inside surface of the door
- Easy connection to external water supply
- Stainless steel water tank with easy access for cleaning
- Cycle documentation through either a printer, USB storage unit or PC



### Technical Data

Weight	K3+: 60 kg, K5+: 74 kg, K7+: 80 kg
Outer dimensions (W x D x H)	526 x 570 (K7+: 620) x 485 mm
Chamber size (W x D x H)	K3+: 200 x 345 x 140 mm K5+: 200 x 345 x 220 mm K7+: 200 x 445 x 220 mm

## Technical Data



### Getinge K-series standard programs

Process type	Program	Process time
B-process	134 °C Wrapped	~25 min
B-process	121 °C Wrapped	~35 min
B-process	134 °C Textile	~45 min
B-process	134 °C 18 minutes	~40 min
S-process	134 °C Dental Special*	~16 min
N-process	134 °C Flash	~11 min

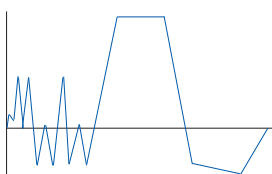
Test programs: Bowie & Dick, Leak test

\* For up to 10 wrapped dental handpieces.

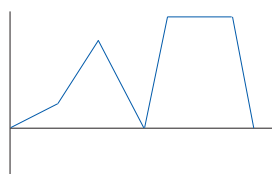
### Getinge K-series optional programs

Liquid cycle	121 °C Liquid	~90 min
Customer-defined	121-134 °C	

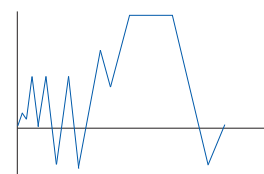
Process times are load dependent and approximate. They refer to a full process including drying with an average load.



B-process



N-process



S-process (Dental Special)

#### Max. load

- Instruments
- Textiles
- Liquid

#### K3+

- 3.0 kg
- 1.5 kg
- 

#### K5+

- 5.0 kg
- 2.5 kg
- 2.0 liters

#### K7+

- 7.0 kg
- 3.5 kg
- 2.0 liters

#### Water connection

Water quality	max. 15 µS/cm
Water pressure	min. 1.0 bar (when water-connected)
Tank volume	5 liters
Water consumption/process	Water-connected: 0.2-0.4 liters Free standing version: approx. 0.1 liters

#### Deionizer DI3G

Capacity at 7.2 dH up to 260 liters

Electrical connection 1-phase, 230 V, 10 Amp.

#### A selection of accessories for Getinge K-series sterilizers

1. Various tray holders
2. Different trays and (dental) cassettes
3. Support for bags (to facilitate drying of goods)
4. Tray handles
5. Deionizer DI3G
6. Printer/USB solution for process documentation

There are many other accessories for Getinge K-series, see separate article list.